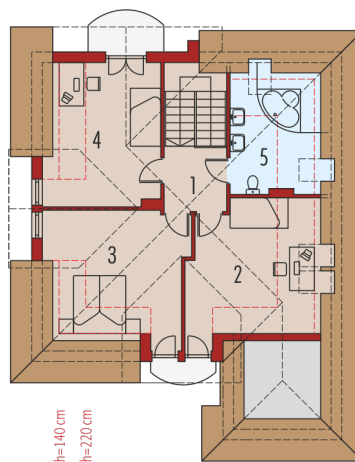
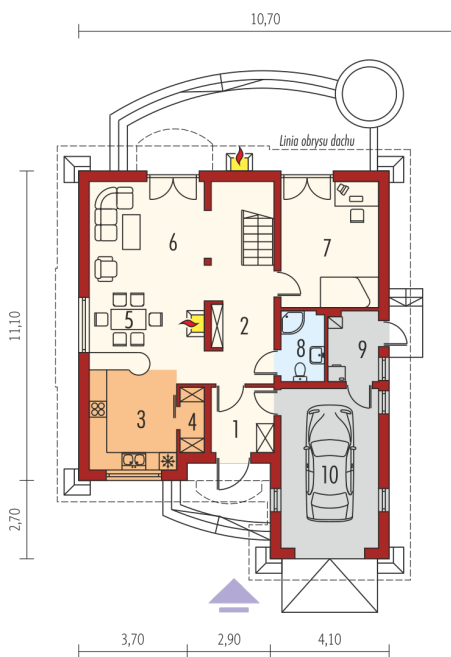
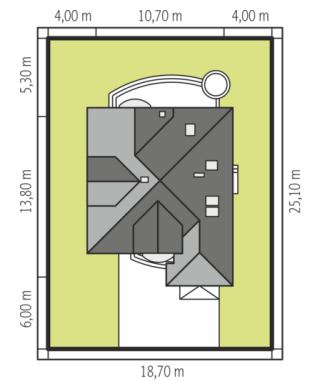
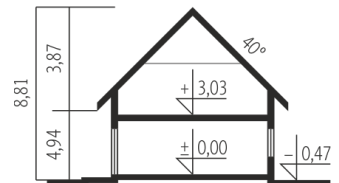




|                       |                       |
|-----------------------|-----------------------|
| Powierzchnia użytkowa | 129.20 m <sup>2</sup> |
| + garaż               | 18.30 m <sup>2</sup>  |
| + kotłownia           | 4.07 m <sup>2</sup>   |
| Powierzchnia zabudowy | 126.04 m <sup>2</sup> |
| Pow. netto            | 196.67 m <sup>2</sup> |
| Kubatura              | 460.82 m <sup>3</sup> |
| Wysokość budynku      | 8.81 m                |
| Kąt nachylenia dachu  | 40°                   |
| Koszt budowy już od:  | 0 zł                  |



### Parter

|                  |                      |
|------------------|----------------------|
| 1. Wiatrołap     | 4.77 m <sup>2</sup>  |
| 2. Hol           | 9.95 m <sup>2</sup>  |
| 3. Kuchnia       | 12.21 m <sup>2</sup> |
| 4. Spiżarnia     | 1.81 m <sup>2</sup>  |
| 5. Jadalnia      | 6.66 m <sup>2</sup>  |
| 6. Pokój dzienny | 16.13 m <sup>2</sup> |
| 7. Gabinet       | 14.43 m <sup>2</sup> |
| 8. Łazienka      | 3.53 m <sup>2</sup>  |
| 9. Kotłownia     | 4.07 m <sup>2</sup>  |
| 10. Garaż        | 18.30 m <sup>2</sup> |

### Poddasze

|              |                      |
|--------------|----------------------|
| 1. Korytarz  | 4.72 m <sup>2</sup>  |
| 2. Sypialnia | 15.06 m <sup>2</sup> |
| 3. Sypialnia | 16.76 m <sup>2</sup> |
| 4. Sypialnia | 16.07 m <sup>2</sup> |
| 5. Łazienka  | 7.10 m <sup>2</sup>  |