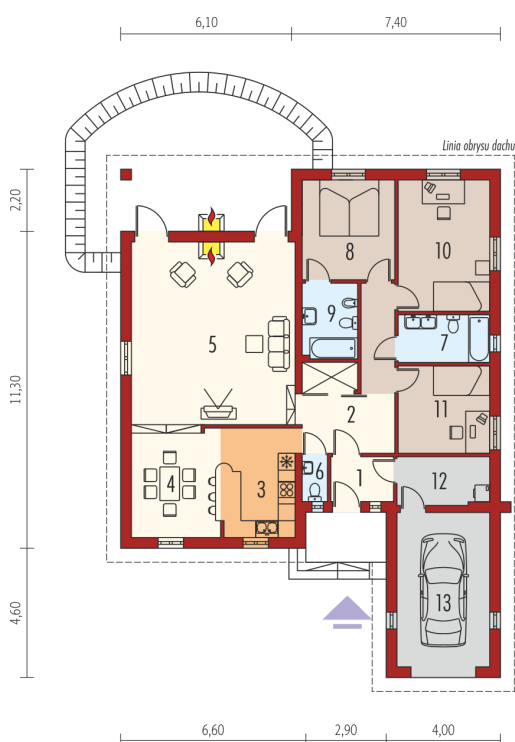
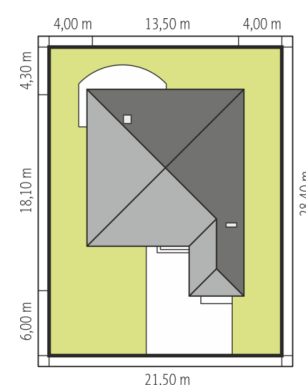
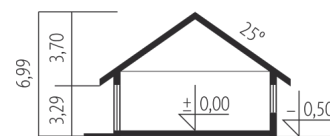




|                       |                       |
|-----------------------|-----------------------|
| Powierzchnia użytkowa | 124.98 m <sup>2</sup> |
| + garaż               | 17.94 m <sup>2</sup>  |
| + kotłownia           | 5.51 m <sup>2</sup>   |
| Powierzchnia zabudowy | 198.49 m <sup>2</sup> |
| Pow. netto            | 155.28 m <sup>2</sup> |
| Kubatura              | 430.53 m <sup>3</sup> |
| Wysokość budynku      | 6.99 m                |
| Kąt nachylenia dachu  | 25°                   |
| <hr/>                 |                       |
| Koszt budowy już od:  | 0 zł                  |



## Parter

|                  |                      |
|------------------|----------------------|
| 1. Wiatrołap     | 3.48 m <sup>2</sup>  |
| 2. Hol           | 13.90 m <sup>2</sup> |
| 3. Kuchnia       | 9.71 m <sup>2</sup>  |
| 4. Jadalnia      | 12.21 m <sup>2</sup> |
| 5. Pokój dzienny | 36.93 m <sup>2</sup> |
| 6. Toaleta       | 1.38 m <sup>2</sup>  |
| 7. Łazienka      | 5.42 m <sup>2</sup>  |
| 8. Sypialnia     | 11.55 m <sup>2</sup> |
| 9. Łazienka      | 5.16 m <sup>2</sup>  |
| 10. Sypialnia    | 15.25 m <sup>2</sup> |
| 11. Sypialnia    | 9.99 m <sup>2</sup>  |
| 12. Kotłownia    | 5.51 m <sup>2</sup>  |
| 13. Garaż        | 17.94 m <sup>2</sup> |