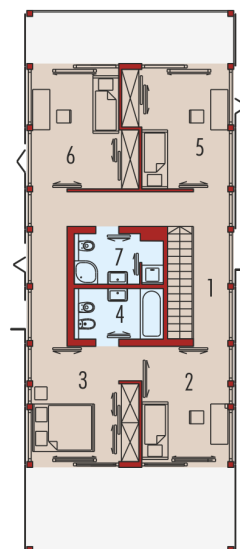
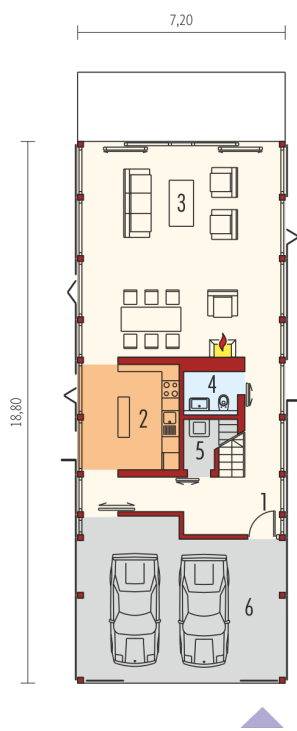
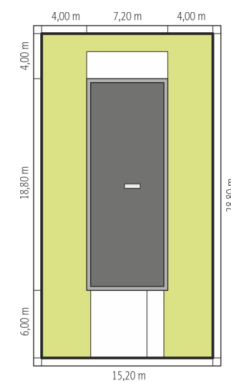
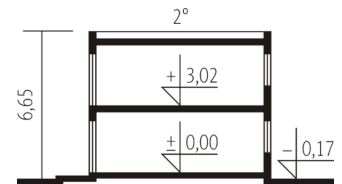




|                       |                       |
|-----------------------|-----------------------|
| Powierzchnia użytkowa | 163.78 m <sup>2</sup> |
| Powierzchnia zabudowy | 136.14 m <sup>2</sup> |
| Pow. netto            | 239.78 m <sup>2</sup> |
| Kubatura              | 630.14 m <sup>3</sup> |
| Wysokość budynku      | 6.65 m                |
| Kąt nachylenia dachu  | 2°                    |
| Koszt budowy już od:  | 0 zł                  |



### Parter

|                             |                      |
|-----------------------------|----------------------|
| 1. Hol                      | 15.52 m <sup>2</sup> |
| 2. Kuchnia                  | 12.59 m <sup>2</sup> |
| 3. Pokój dzienny + jadalnia | 49.23 m <sup>2</sup> |
| 4. Łazienka                 | 2.91 m <sup>2</sup>  |
| 5. Pom. gospodarcze         | 1.73 m <sup>2</sup>  |
| 6. Garaż (wiaty)            | 34.93 m <sup>2</sup> |

### Piętro I

|              |                      |
|--------------|----------------------|
| 1. Korytarz  | 17.81 m <sup>2</sup> |
| 2. Pokój     | 11.83 m <sup>2</sup> |
| 3. Sypialnia | 14.67 m <sup>2</sup> |
| 4. Łazienka  | 5.01 m <sup>2</sup>  |
| 5. Pokój     | 13.70 m <sup>2</sup> |
| 6. Pokój     | 13.66 m <sup>2</sup> |
| 7. Łazienka  | 5.12 m <sup>2</sup>  |